

Enhancements to Jobs Support Scheme (JSS)

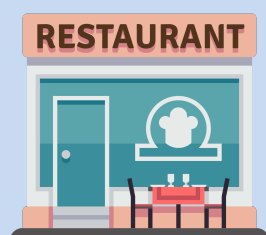
To offset and protect local employees' wages for sectors affected by Phase 2 (Heightened Alert) measures



Sectors with Enhanced JSS Support

50%

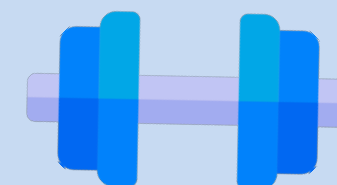
Licensed Food Shops & Food Stalls



Performing Arts & Arts Education



Gyms & Sports Facilities*



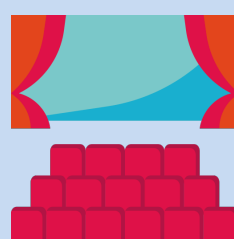
*JSS support will replace the operating grant for gyms & fitness studios under the Sports Resilience Package from 16 May to 13 Jun '21

30%

Qualifying Retail Outlets**



Cinema Operators



Museums, Art Galleries, & Historical Sites



Family Entertainment Centres



Affected Personal Care Services



**Supermarkets, convenience stores, and online retailers are not eligible

Duration of JSS Enhancements

- Payouts will be **enhanced for the period of Phase 2 (Heightened Alert)**, and will be disbursed in **Sep '21**.

← Payout Coverage →

Will be disbursed in:

Apr '21

May '21

Enhanced from
16 May to 13 Jun

Jun '21

Sep '21